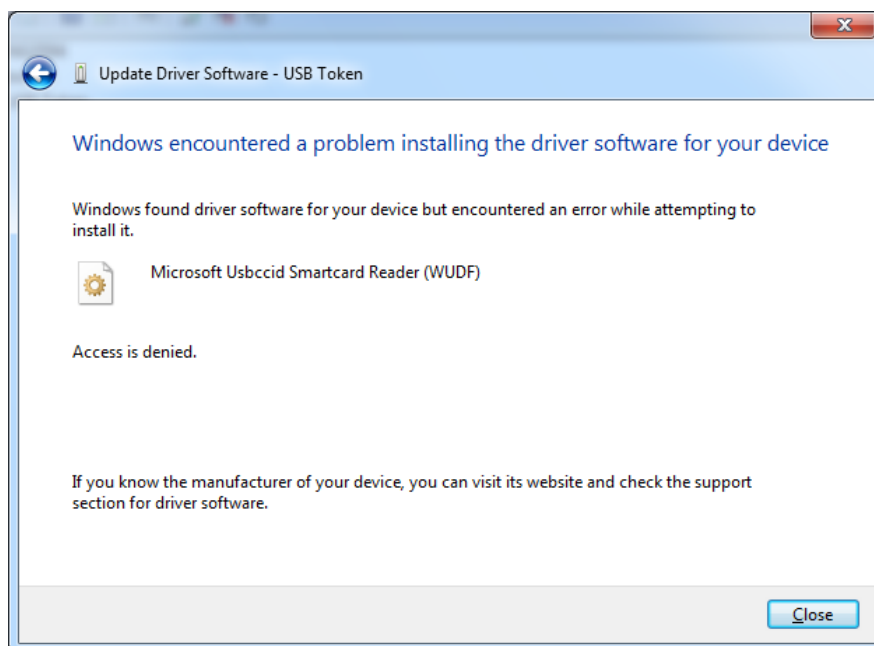


“Access is denied” when updating CCID driver

1. Problem Description

CCID smart card reader driver is published by Microsoft and used for any hardware which is CCID protocol compliant. From Windows Vista, CCID driver is a inbox driver on Windows. But in these days, a few customers met a problem when they use our standard CCID USB Key on Windows. The hardware's driver can not work perfectly or can not be installed smoothly. The “Update Driver Software” dialog will report the error “Access is denied” just like below image.



The reason of this error is the permission of system has been changed because of some Trojan horse software or some other terrible program. And also this can be result of some bad drivers. The permission of registry and system files may be modified by them for some special purpose.

2. Solution

Please note: This solution is just for your reference! You can use your own method to repair registry and system permission.

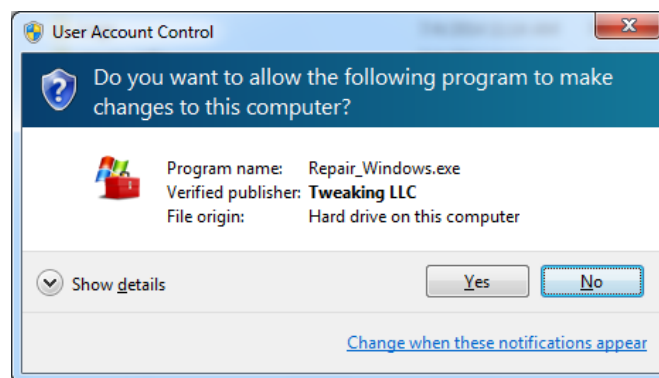
To install CCID driver perfectly, you should fix permission of registry and system file. Normally you need only repair your registry, and then you can use your CCID device well. Please fix with following steps.

2.1 Download the tool “Windows Repair”

You can download the tool from http://www.tweaking.com/content/page/windows_repair_all_in_one.html . This tool is a third-party tool, not from Feitian Technologies, so we will not guarantee with any consequence with using this tool. The portable one is recommended, it doesn't need be installed, you can use it directly. Please always download the latest version, now we are using v2.7.5 to demonstrate on Windows 7.

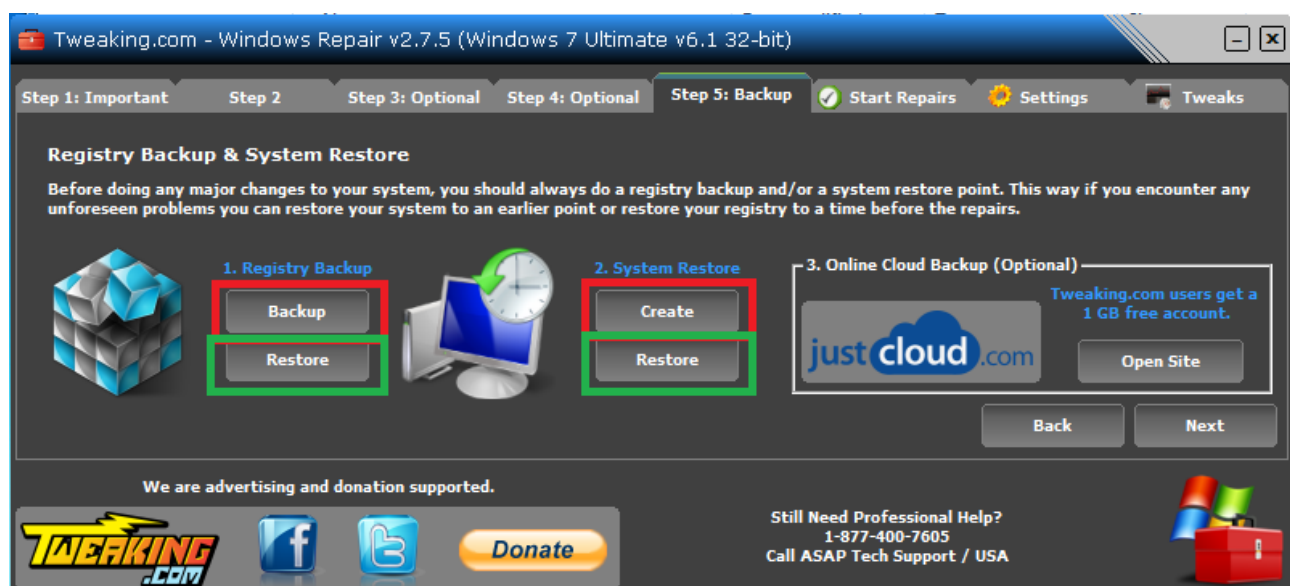
2.2 Backup your Registry and System

Unzip your downloaded package and run the tool. You can right click on the “Repair_Windows.exe” executable file and choose “Run as administrator”. Or you can just double click on this file. Normally windows UAC will prompt to ask your permission just like this.



Click “Yes” to run the tool.

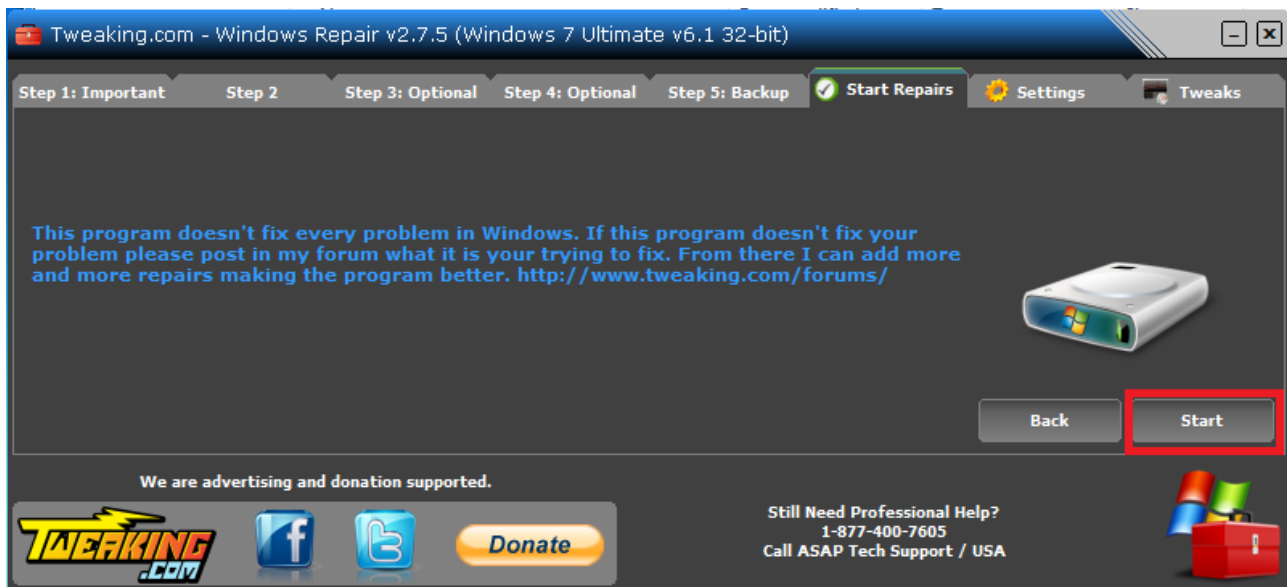
This tool will guide you to do the repair step by step. Please read the message on every step dialog. You can just click “Next” to ignore the first 4 steps, but I highly recommend you do the step 5 to backup your registry and get a system restore point.



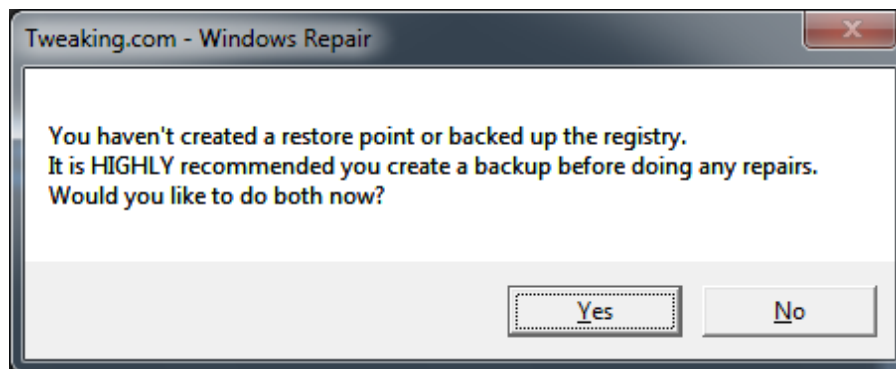
Please choose the buttons inside the red rectangle to do the backup. If you have any problem with your system after using the tool, you can restore it to previous status using the buttons inside green rectangle.

2.3 Choose the repair option

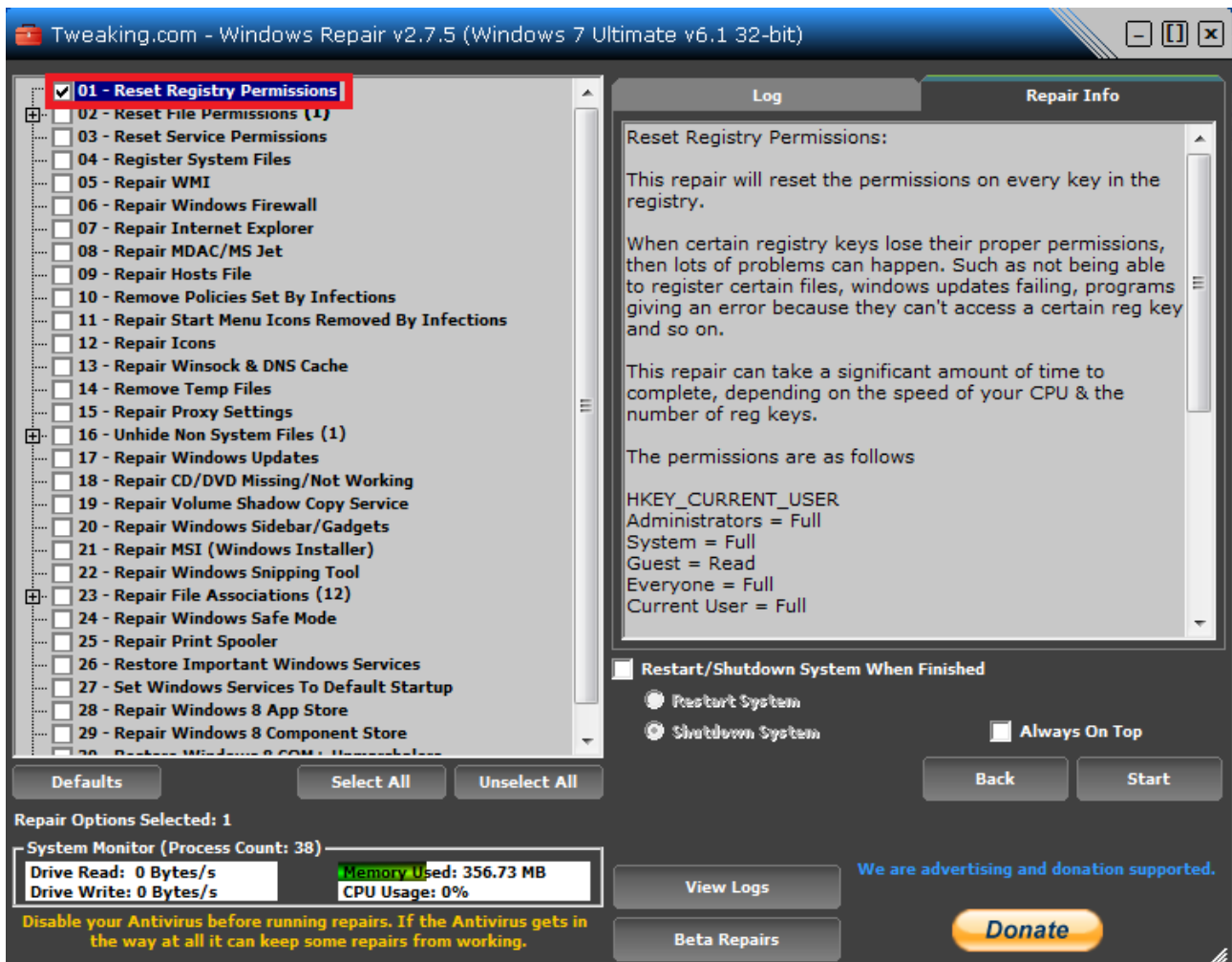
Now you can go to the next step to do the repair. Click the “Start” button to show the repair options.



If you have not backup your system, you will be notified as this.



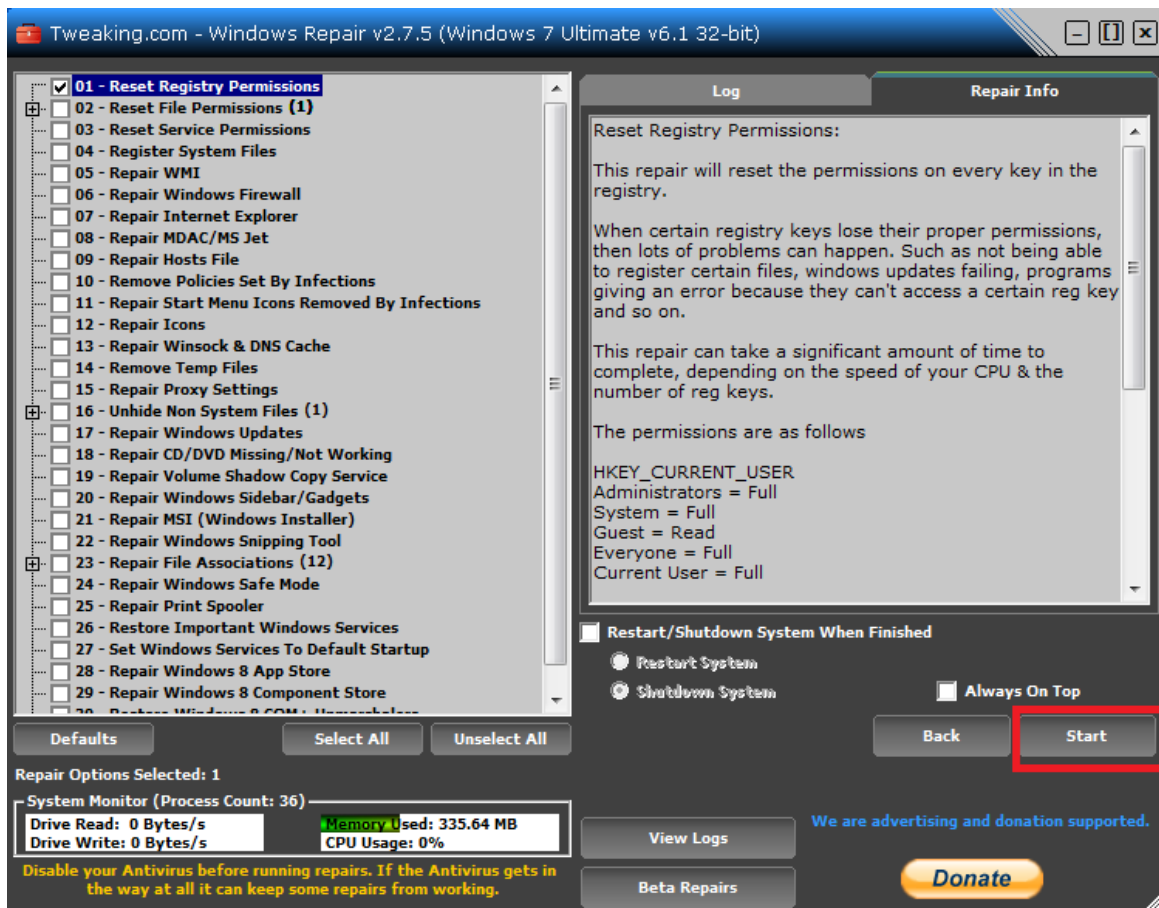
You can choose as you want. Click “No” to go to repair option dialog directly. From the repair option dialog, please click “Unselect All” button and then select only the first option “01 - Reset Registry Permissions” as below image:



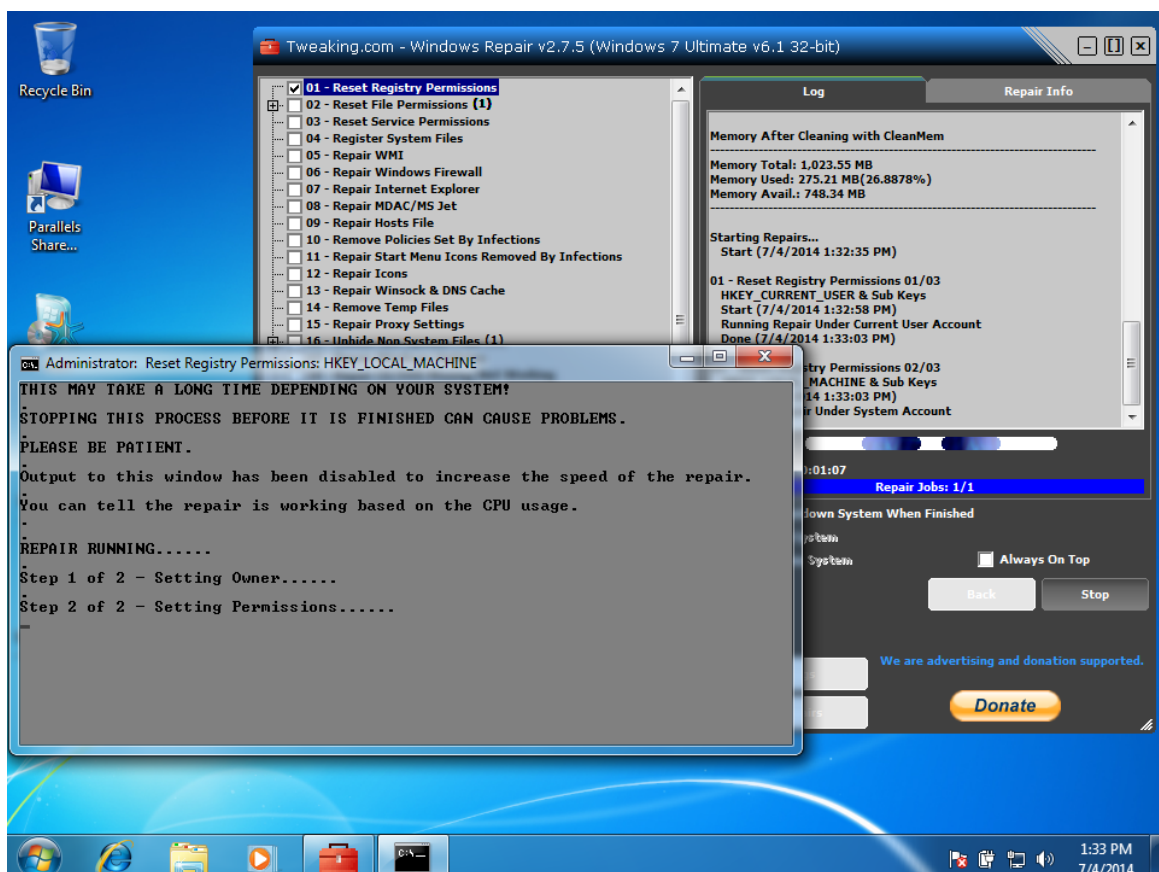
Normally this is enough for your CCID driver installation repair. But if your CCID driver still can not work well after repair with this only one option, you can choose more, even you can choose all of these options or just click “Defaults” button to reset the options to be default selected. But this will need more time to complete the repair.

2.4 Do the repair

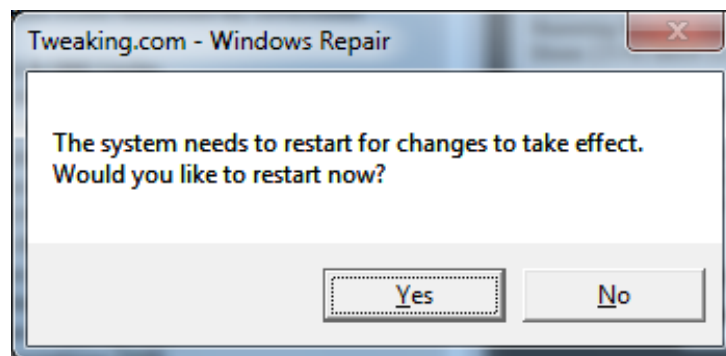
You can click “Start” button to begin the repair. This will need some time depending on the option(s) you choose, more options you choose, more time you will take.



After starting, this tool will call other embed tools to start repair. This will prompt some console dialog beside of the main dialog and show the log step messages on the log panel of the main dialog.



Please wait until all the steps have been finished. This tool will ask for a reboot to complete the repair. Please reboot your computer.



2.5 Update the driver

Now you can update your CCID driver with plug USB Key, or you can follow the guide dialog of "Update Driver Software ..." when you right click on the node of CCID hardware device in device manager.

